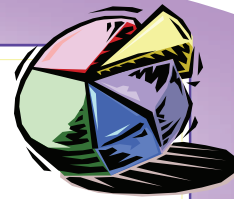


Morehead State University Spring 2003



...IN A NUTSHELL...

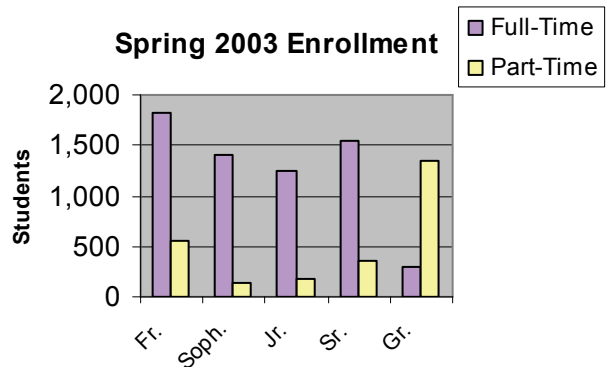
Spring 2003 Enrollment By Traditional Classification

Classification	Full-Time	Part-Time	Total
Freshman	1,829	549	2,378
Sophomore	1,410	135	1,545
Junior	1,238	174	1,412
Senior	1,553	359	1,912
Graduate	296	1,342	1,638
TOTAL	6,326	2,559	8,885

Special points of interest:

- 203 New Transfer Students
- About 464 Faculty are Teaching 2000+ Classes (full-time, part-time and adjunct)

Spring 2003 Enrollment



Retention Rates Fall 2002 to Spring 2003 By CPE Classifications

CPE Classification	Fall 2002	Spring 2003	% Retained
FTRR	1,546	1,298	84%
Freshman (All)	2,678	2,156	81%
Sophomores	1,483	1,329	90%
Juniors (*-13)	*1,375	1,236	**91%
Seniors (*-234)	*1,765	1,388	**91%
UG—Nondegree	271	156	58%
Auditor	7	3	43%
High School	72	22	31%
Post Baccalaureate (2nd UG Degree Seekers)	60	49	82%
Graduate—Degree (*-88)	*1,015	645	**70%
Graduate—Nondegree	664	366	55%
TOTAL Classifications	9,390	7,350	**81%

*Received degrees in Fall 2002 and did not re-enroll

**Adjusted for Fall 2002 degree non-returnees

Spring 2003 Off-Campus Enrollment

Center	Number of Classes		Unduplicated Headcount	FTE
	On-Site	DL		
Ashland	22	9	288	91.187
Flemingsburg		1	8	2
Hindman		3	6	1.19
Jackson	6	10	96	28.75
Louisa		2	5	1.19
Mayo		3	7	2.31
Maysville		5	8	2.25
Mt. Sterling	17	6	208	53.5
Owingsville		2	6	1.5
Pikeville	7	1	130	42.25
Prestonsburg	64	14	675	250.54
Raceland		4	21	4.69
Salyersville		3	9	2.06
West Liberty	46	9	483	169.94
Whitesburg	2	1	22	6.25
Internet		52	774	246.81
KyVU		14	38	7.88
TOTAL	164	139	2,784	914.297

Represents 143 sections of 30 distance learning classes and 52 internet classes.

Source: Office of Graduate & Extended Campus Programs