

MOREHEAD STATE UNIVERSITY

Spring 2005

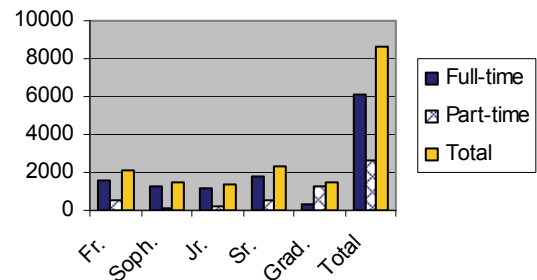


...In a Nutshell...

Spring 2005 Enrollment By Traditional Classification

Classification	Full-Time	Part-Time	Total
Freshmen	1,560	500	2,060
Sophomores	1,313	144	1,457
Juniors	1,144	198	1,342
Seniors	1,787	527	2,314
Graduates	296	1,211	1,507
TOTAL	6,100	2,580	8,680

Full-Time & Part-Time Enrollment



Special Points of Interest

- 237 New Transfer Students
- Approximately 418 Faculty are Teaching 2220+ Courses (full-time and part-time)

Retention Rates Fall 2004 to Spring 2005 By CPE Classifications

CPE Classification	Fall 2003	Spring 2004	% Retained
FTFR	1,284	1,069	83%
Freshmen (All)	2,316	1,853	80%
Sophomores	1,472	1,279	87%
Juniors (*-9)	*1,427	1,267	**89%
Seniors (*-281)	*1,988	1,555	**91%
UG-Nondegree	328	182	55%
Auditor	5	3	60%
High School	158	49	31%
Post Baccalaureate (2nd UG Degree Seekers)	67	50	75%
Graduate—Degree (*-61)	*1,002	707	**75%
Graduate—Nondegree	530	280	53%
TOTAL Classifications	9,293	7,225	**78%

Spring 2005 Off-Campus Enrollment

Site	Number of Classes		Undup. Headcount	*FTE
	On-Site	DL		
Ashland	27	18	336	135.75
Hazard	6	0	30	10.06
Hindman	0	3	5	1.63
Jackson	3	13	63	18.31
Maysville	1	0	17	5.5
Mt. Sterling	42	13	470	175.0
Pikeville	3	0	45	15.75
Prestonsburg	58	21	570	233.04
West Liberty	50	13	440	166.13
Wolfe Co.	1	0	11	2.06
Internet	0	119	1,425	440.08
KET	3	0	78	17.81
TOTAL	194	200	3,490	1,221.12

Source: Office of Academic Outreach & Support, 05/11/05
*Full-Time Equivalency

*Received degrees in Fall 2004 and did not re-enroll

**Adjusted for Fall 2004 degree non-returnees

Source: Fall and spring enrollment reports to CPE (AIMS student file)

Spring 2005 data preliminary
As of May 11, 2005